

SuperReporter 2

Generate Statistics Reports for Billing and Performance Analysis

Highlights

- Manage Multiple Projects Simultaneously
- Generate Reports Whenever Needed
- Monitor Current Status of SMP Players
- Generate Reports by Agent
- Playback Analysis from Multiple Angles
- Export Reports into Two Formats
- Generate Reports Automatically and Periodically

SuperReporter 2 is the advanced reporting software dedicated for CAYIN digital signage network. Incorporated with CAYIN SMP players, the software assists administrators in generating playback and system status reports instantly for multiple digital signage networks.



SuperReporter 2 is best applicable to

Digital Signage Media Operators:

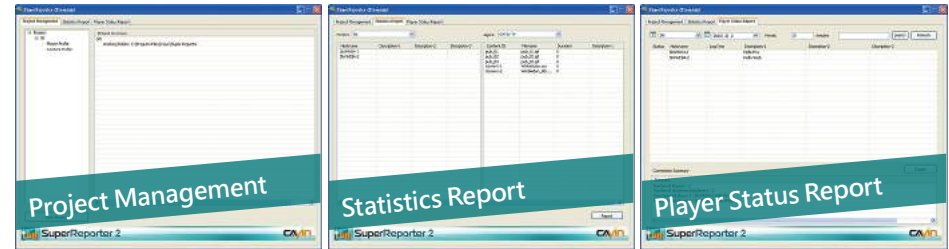
The software can generate playback reports for billing in commercial applications.

Digital Signage Network Users:

Administrators can generate reports easily for periodical performance review.

User Interface Introduction

The user interface of SuperReporter 2 is composed of three major areas:



Edits player and content profiles.

Previews statistics diagrams and generates complete reports.

Monitors current and history log-receiving status of all SMP players.

Project Management

Manage Multiple Projects Simultaneously

Administrators can manage different digital signage networks at the same time and generate reports based on each project. This classification function can also be used to manage players based on geographic regions, customers, contents, business models, etc.



Generate Reports Whenever Needed

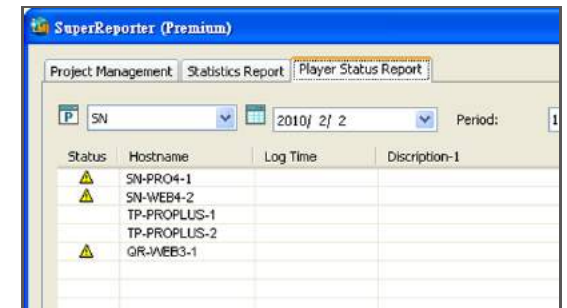
Administrators can select any time period to conduct analysis and generate reports whenever they are needed.



Monitor Current Status of SMP Players

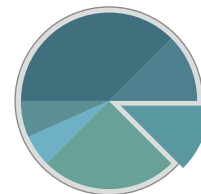
SuperReporter 2 assists administrators in conducting preliminary check of SMP players' status. When the software cannot receive SMP player's log records, a warning sign will be shown in the Player Status Report, so that problems can be verified and solved immediately.

Player Status Report

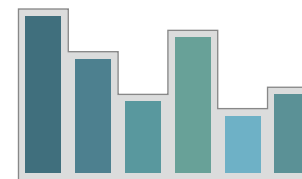


Three Major Report Types

Pie Chart



Bar Chart



Tables/Figures



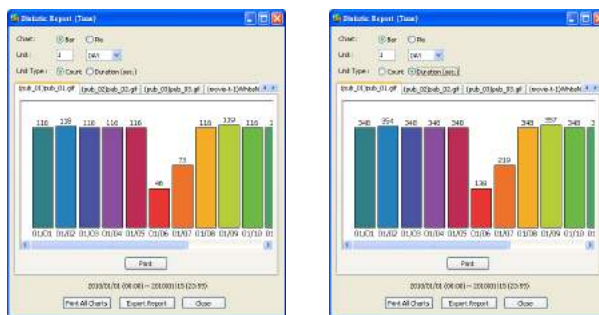
Playback Report

Generate Reports by Agent

Administrators can filter different content sources immediately and generate reports particularly for a specific advertising agency or content providers.

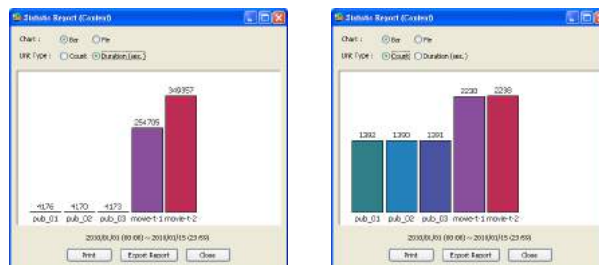
Playback Analysis from Multiple Angles

Administrators can preview reports within a selected time period in the following two ways:



Comparison Chart over Time

Users can check the total number of playback times and total running time of each multimedia file per day or per hour.

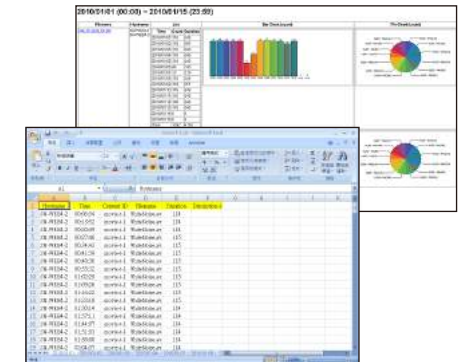


Comparison Chart among Files

Users can compare the total number of playback times and total running time of different selected multimedia files.

Export Reports into Two Formats

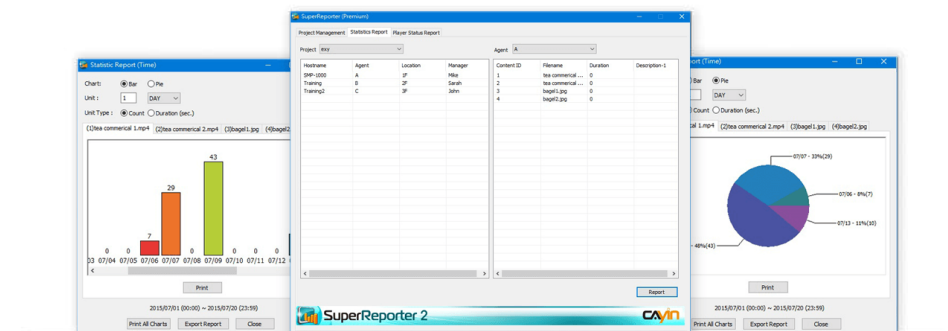
•**HTML:** All statistics and diagrams can be exported into HTML files. Administrators can share reports easily with advertisers, advertising agencies, or other users via Internet.



•**Excel:** SuperReporter 2 can export Excel files, detailing all playback records of each multimedia file. Administrators can utilize these raw data to conduct further analysis and create their own reports and diagrams with great flexibility.

Generate Reports Automatically and Periodically

SuperReporter 2, incorporated with batch files or Windows® Scheduled Tasks, can automatically generate and send some types of reports daily or weekly. For example, administrators can generate a report, send it to marketing staff by email, and save a copy to your PC on the first day of each month.



System Requirements

Operating System	Windows® XP, Windows® Vista, Windows® 7, Windows® 8, Windows® 10 or Windows® 11
Display Resolution	1024 x 768 or above is recommended
Processor	Intel® Pentium® 4 compatible CPU or above
Memory	512 MB minimum. 1024 MB or more is recommended
Hard Disk	10MB for program and configurations, 20GB or more for storing log records

- * Features and specifications are subject to change without notice.
- * All brand names and trade marks are the property of their respective owners.
- * Software will be delivered via online download.

System Structure

